

Protocol to collect late latency auditory evoked potentials

*Luzia Maria Pozzobom Ventura*¹, *Kátia de Freitas Alvarenga*², *Orozimbo Alves Costa Filho*³

Keywords: protocols, evoked potentials, auditory.

Summary

Long Latency Auditory Evoked Potentials (LLAEP) represents a number of electrical changes occurring in the central nervous system, resulting from stimulation of the auditory sensorial pathways. Many studies approach the use of these potentials controlling the artifact created by eye movement with the use of equipment with a large number of channels. However, what happens is very different in Brazilian clinical practice, where the equipment used has a very limited number of channels. **Aim:** to compare the two methods used to control the artifacts created by eye movements during LLAEP capture using two recording channels. **Materials and Methods:** this is a prospective study with the application of two LLAEP capturing methods (eye artifact subtraction and rejection limit control) in 10 normal hearing individuals. **Results:** we did not observe statistically significant differences concerning the latency values obtained with the use of both methods, only concerning amplitude values. **Conclusion:** both methods were efficient to capture the LLAEP and to control the eye movement artifact. The rejection limit control method produced greater amplitude values.

¹ Master's degree in speech therapy, Dentistry School of Bauru, Sao Paulo University - USP. Speech therapist at the Audiology Research Center, Craniofacial Anomaly Rehabilitation Hospital, USP.

² Postdoctoral degree in electrophysiology, University of Michigan, and in child audiological assessment, University of Manchester. Associate professor at the Speech Therapy Department, Dentistry School of Bauru, USP.

³ Doctoral degree in otology science, Pontifical Catholic University of Sao Paulo. Full professor at the Speech Therapy Department, Dentistry School of Bauru, USP. Paper submitted to the BJORL-SGP (Publishing Management System – Brazilian Journal of Otorhinolaryngology) on 21 October 2008; and accepted on 19 May 2009. cod. 6085

INTRODUCTION

Many systems generate long-latency auditory evoked potentials (LLAEPs), in particular the thalamocortical and corticocortical auditory pathways, the primary auditory cortex, and associative cortical areas.¹ LLAEPs are represented on electroencephalogram tracings as a series of peaks that include the P1, N1 and P2 components.

Two Brazilian studies have applied LLAEPs testing in their methods to characterize the maturation of the auditory system;^{2,3} these studies showed that maturation is reflected in age-related amplitude and latency variations of P1, N1 and P2.

Variables to be controlled in LLAEP recordings are sleep and sedation, otherwise the amplitude of potentials may be attenuated and poorly reproducible.⁴ Thus, a positive factor for testing short latency potentials in children, namely natural or induced sleep by sedation, introduces an additional variable, the presence of ocular movements, which may generate artifacts that contaminate the tracings of potentials. Thus, in LLAEP testing, controlling ocular movement artifacts is essential. There are many internationally published papers dealing with this issue;⁵⁻²⁷ in the Brazilian medical literature, however, there is only one paper on this topic.³ The arrangement of electrodes is one of the variables to be taken into account for recording ocular movement; the supra- and infraorbital positions are preferred.^{3,5-14} Additionally, other studies have suggested using jointly the electrodes placed on the external end of the eyes.¹¹⁻¹⁴ Other techniques include automatically controlling the artifact, which consists of automatically excluding auditory potentials recorded during ocular movement,^{6,13,15-18} eye fixation as a method for minimizing ocular movement,^{8,19} and rejecting those recordings with amplitudes that encompass ocular movement;^{5,20-21} no detailed explanation, however, is given as to how these techniques are done. In Brazil, fully using the methods presented in the international literature is not feasible, because many recording channels are used for controlling ocular artifacts, and in most cases the devices available in this country have only two recording channels. Thus, an assessment protocol adapted to locally available resources is needed. Therefore, the purpose of this study was to compare two ocular artifact-controlling methods when recording LLAEPs based on the recording system of potentials from two channels.

METHOD

The Institutional Review Board approved this study (number 99/2006), and subjects provided consent for their participation and dissemination of results, according to the Law 196/96, by signing the free informed consent form.

The series consisted of 10 adults aged from 20 to

31 years, mean age of 25 years and 10 months (± 3.36 years); there were five males and five females, all with no audiological complaints or any history of neurological conditions. Subjects were normal hearing, as demonstrated by pure tone audiometry, done with a Madsen Electronics Midimate 622 device in an acoustic booth, and acoustic immittance testing done with a Grason-Stadler GSI device.

LLAEP testing was done with an Intelligent Hearing Systems Smart EP USB Jr two-channel device calibrated in hearing level (dBHL) before the test. Response stimulus and recording parameters were:

- Click stimulus, condensation polarity, 100 μ s duration, 526 ms inter-stimulus interval, presented using insertion phones in the right ear, 70 dBHL intensity, and 1.9 stimulus-per-second presentation rate.

- Band pass filter 1 to 30 Hz, 100.0 K gain in both channels, response analysis window -100 ms pre-stimulation to 500 ms post-stimulus. 512 stimuli promediated stimuli were used twice to check double recordings.

- Disposable Meditrace™ 200 ECG electrodes and Tem 20TM conductive gel for EEG, placed after skin cleaning with Nuprep abrasive gel for ECG/EEG. The impedance level was kept from 1-3 Kohms.

With only two recording channels, one was used for recording auditory evoked potentials (Channel A) and the other was used for recording ocular movements and blinking (Channel B). The channel A active electrode was placed on Cz, connected to the preamplifier input (+) and the reference electrode was placed on the right ear lobule (A2), connected to the input (-). The ground electrode was placed on the left ear lobule (A1), connected to the ground position. The channel B active electrode was placed on the left supraorbital position, connected to the preamplifier input (+) and the reference electrode was placed on the left infraorbital position, connected to input (-).

The artifact rejection level was adjusted in channel B to include the ocular movement amplitude and blinking in each subjects, and transposed to channel A to maintain a 30% level of rejected stimuli, to record potentials with a morphology that made it possible to accurately analyze the recording in a feasible time for clinical practice, since lower levels increased the duration of the exam, rendering it impractical.

Having identified the auditory evoke potential, amplitude was established as the difference between the 0.0 μ V point (recording baseline) and the maximum positive value, in this case the P1 and P2 components, and the negative value, specifically for the N1 component, measured in μ V. P1, N1 and P2 and the latency values were then marked, taking into account the maximum amplitude points.

Testing was done in an acoustically and electrically treated booth; subjects were seated comfortably in a reclining seat, watching a silent movie.

Two ocular movement artifact-cancelling methods were tested, described below:

Controlling the rejection limit

Prior recording of ocular movement and blinking was done in channel B to verify its amplitude and set the rejection level for each exam, so that these movements would not be picked up in channel A (and interfere with LLAEP recordings). Thus, auditory evoked potentials were recorded to minimize any interference from ocular movement artifacts (Fig. 1).

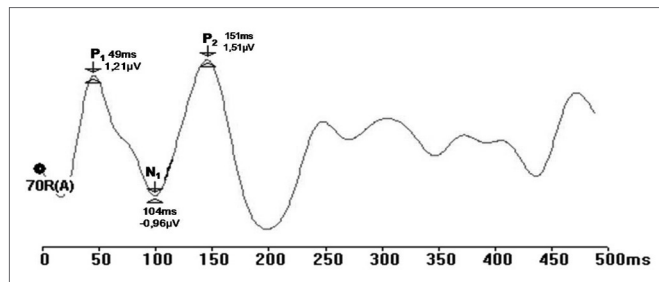


Figure 1. Recording of long latency auditory evoked potentials by the rejection limit control method (ms - milliseconds, mV - microvolt).

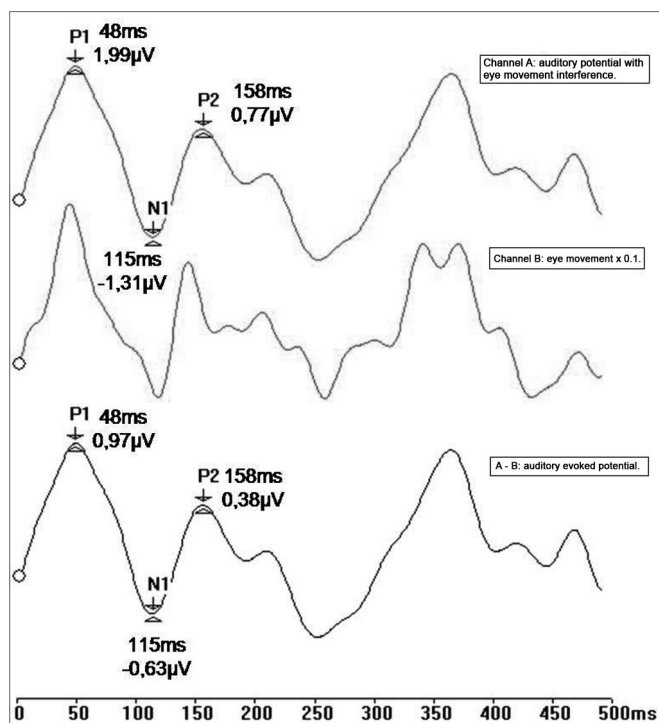


Figure 2. Recording of long latency auditory evoked potentials by the ocular artifact subtraction method (ms - milliseconds, mV - microvolt).

Subtracting the ocular artifact

LLAEPs were recorded in channel A, and ocular movement and blinking were simultaneously recorded in channel B. Next, recording of ocular movements were

multiplied by a correction factor (0.1) that had been set in a prior study.²⁸ The idea was to minimize any difference between blinking and ocular movement amplitude picked up in channels A and B.

A subtraction process was applied wherein the ocular movement recording was subtracted from the auditory potential recordings (response A-B). An auditory evoked potential recording resulted, which eliminated any interference from ocular movement artifacts; there was also phase correspondence between the potentials (Fig. 2).

LLAEPs were investigated in each study subject using both methods applied twice (1st and 2nd studies) in the same session to verify the test-retest reliability of potentials. The first method varied from subject to subject to control for application order variability.

The statistical study consisted of the paired t test for analyzing latency values and amplitudes among the methods applied in this study. The significance level was $p=0.05$.

RESULTS

The results of latency values and LLAEPs amplitudes were analyzed and are shown on tables showing the descriptive statistics (mean, significance level, and p significance level). Table 1 shows the statistical analysis comparing the results from the 1st and 2nd tests of the same method, and the ocular artifact subtraction method and rejection limit control. Table 2 shows the statistical analysis comparing the methods used for controlling the ocular artifact.

DISCUSSION

LLAEPs in clinical practice offer a direct non-invasive evaluation of auditory cortical physiology; furthermore, these potentials have been used in several studies investigating the sites where recording are picked up and the maturity level of central auditory structures.

Most of the studies we found were published in the international literature, done with multiple electrodes using multiple channel devices, which we generally do not have available in our context. The degree of alertness affects LLAEPs recordings;⁴ therefore, several authors recommend controlling ocular movement artifacts in this test. It becomes an ally for reliable recordings by eliminating subjectivity; however, no detailed descriptions were found about this method.⁵⁻²⁷

Only two studies on the use of these potentials for studying central auditory maturity have been published in Brazilian literature;^{2,3} in these cases, two-channel devices were used to demonstrate that, as the auditory system matures, latency values and LLAEP amplitudes change. One of these studies³ attempted to control the ocular movement artifact. Thus, a method applicable to local reality

Table 1. Comparison among latency values, and P1, N1 and P2 amplitude components in each test (1st and 2nd tests) in each method.

Method	Measure	1 st Test		2 nd Test		p
		Mean	SD	Mean	SD	
Subtraction	LP ₁	51,22	16,75	49,44	10,19	0,631
	AP ₁	0,36	0,27	0,26	0,17	0,361
	LN ₁	84,25	17,49	81,63	14,07	0,317
	AN ₁	-0,37	0,15	-0,36	0,21	0,903
	LP ₂	140,89	17,69	139,11	19,54	0,775
	AP ₂	0,35	0,12	0,30	0,18	0,407
Rejection	LP ₁	50,14	10,9	44,17	10,82	0,433
	AP ₁	0,67	0,32	0,81	0,19	0,169
	LN ₁	84,56	21,1	84,78	19,36	0,977
	AN ₁	-0,88	0,32	-0,72	0,53	0,393
	LP ₂	139,6	20,57	140,6	23,83	0,906
	AP ₂	0,80	0,39	0,63	0,37	0,298

(L - latency of each component measured in ms, A - amplitude of each component measured in μ V, SD - standard deviation, p - significance level).

Table 2. Comparison among latency values and P1, N1 and P2 component amplitudes of the different methods.

Measure	Subtraction		Rejection		p
	Mean	SD	Mean	SD	
LP ₁	54,75	13,88	51,63	10,93	0,264
AP ₁	0,34	0,28	0,62	0,34	0,019
LN ₁	84,25	17,49	81,38	20,11	0,482
AN ₁	-0,37	0,15	-0,95	0,27	0,000
LP ₂	140,89	17,69	143,11	18,37	0,350
AP ₂	0,35	0,12	0,81	0,41	0,004

(L - latency of each component measured in ms, A - amplitude of each component measured in μ V, SD - standard deviation, p - significance level).

was needed for controlling this artifact.

The purpose of this study was not to establish guidelines for latency and amplitude values of LLAEP components in adults, but to describe the recording methods for these procedures and to compare ocular movement control during testing. We intended to apply international parameters used in research adapted to two channel devices, which are generally used in the Brazilian context. The sample size reflected this aim.

Placing channel B electrodes on the supra- and infra-orbital positions was effective for recording ocular movements and blinking, as has been described also by several authors.⁵⁻¹⁴ Using electrodes placed bilaterally on the external tip of eyes, reported by some authors,¹¹⁻¹⁴ was not done in this study, since there was no electrode for the

external ocular region (there were only two channels); this did not affect the quality of ocular movement recordings.

Both methods (rejection limit control and ocular artifact subtraction) enabled us to record LLAEPs, and were easy to apply; both reduced ocular movements.

Table 1 shows the mean amplitude and latency values of each LLAEP components (P1, N1 and P2); no statistically significant differences were seen in the 1st and 2nd tests in both methods ($p > 0.05$), which underlines their test-retest reliability.

Table 2 shows the mean amplitude and latency values of P1, N1 and P2 components, and a comparison between methods (p). There was no statistically significant difference between these methods with regards to latency values, but there was a statistically significant difference ($p = 0.05$) among amplitude values, which were higher when using the rejection limit control method for all components. Higher amplitudes with the rejection limit control method may justify choosing this method in clinical practice, since a higher amplitude often means a better definition of components. The potential can thus be established correctly, resulting in increased accuracy for measuring latency and amplitude values of these potentials.

CONCLUSION

Both methods effectively recorded LLAEPs and controlled ocular movement artifacts during testing. However, the rejection limit control method yielded the best view of potentials because of higher measured P1, N1 and P2 component amplitude values.

REFERENCES

1. Ponton CW, Eggermont JJ, Khosla D, Kwong B, Don M. Maturation of human central auditory system activity: separating auditory evoked potentials by dipole source modeling. *Clin Neurophysiol.* 2002;113:407-20.
2. Frizzo ACF, Junqueira CA de O, Fellipe ACN de, Colafêmina JF. Potenciais evocados auditivos de longa latência no processo maturacional. *ACTA AWHO.* 2001;20(2):74-80.
3. Ventura LMP, Costa Filho OA, Alvarenga KF. Maturação do sistema auditivo central em crianças ouvintes normais. *Pró-fono* In press.
4. Rapin I, Schimmel H, Cohen M. Reliability in detecting the auditory evoked response (AEP) for audiometry in sleep subjects. *Electroencephalogr Clin Neurophysiol.* 1972;32:335-44.
5. Martin L, Barajas JJ, Fernandez R, Torres E. Auditory event-related potentials in well-characterized groups of children. *Electroencephalogr Clin Neurophysiol.* 1988;71:375-81.
6. Johnson Jr R. Developmental evidence for modality-dependent P300 generators: a normative study. In *J Psychophysiol.* 1989 Nov;26(6): 651-67.
7. Fuchigami T, Okubo O, Fujita Y, Okuni M, Noguchi Y, Yamada T. Auditory event-related potentials and reaction time in children: evaluation of cognitive development. *Dev Med Child Neurol.* 1993;35:230-7.
8. Johnstone ST, Barry RJ, Anderson JW, Coyle SF. Age-related changes in child and adolescent event-related potential component morphology, amplitude and latency to standard and target stimuli in an auditory oddball task. *Int J Psychophysiol.* 1996;24:223-38.
9. Ponton CW, Don M, Eggermont JJ, Waring MD, Masuda A. Maturation of human cortical auditory function: differences between normal-hearing children and children with cochlear implants. *Ear Hear.* 1996 Oct;17(5): 430-7.
10. Bruneau N, Roux S, Guérin P, Barthélémy C, Lelord G. Temporal prominence of auditory evoked potentials (N1 wave) in 4-8-year-old children. In *J Psychophysiol.* 1997;34:32-8.
11. Ceponiene R, Rinne T, Näätänen R. Maturation of cortical sound processing as indexed by event-related potentials. *Clin Neurophysiol.* 2002;113:870-82.
12. Takeshita K, Nagamine T, Thuy DHD, Satow T, Matsushashi M, Yamamoto J, et al. Maturation changes of parallel auditory processing in school-aged children revealed by simultaneous recording of magnetic and electric cortical responses. *Clin Neurophysiol.* 2002;113:1470-84.
13. Gilley PM, Sharma A, Dorman M, Martin K. Developmental changes in refractoriness of the cortical auditory evoked potential. *Clin Neurophysiol.* 2005;116:648-57.
14. Bender S, Oelkers-Ax R, Resch F, Weisbrod M. Frontal lobe involvement in the processing of meaningful auditory stimuli develops during childhood and adolescence. *Neuroimage.* 2006;33:759-73.
15. Satterfield JH, Braley BW. Evoked potentials and brain maturation in hyperactive and normal children. *Electroencephalogr Clin Neurophysiol.* 1977;43:43-51.
16. Satterfield JH, Schell AM, Backs RW, Hidaka KC. A cross-sectional and longitudinal study of age effects of electrophysiological measures in hyperactive and normal children. *Biol Psychiatr.* 1984;19(7):973-90.
17. Kraus N, McGee T, Carrell T, Sharma A, Micco A, Nicol T. Speech-evoked cortical potentials in children. *J Am Acad Audiol.* 1993;4:238-48.
18. Sharma A, Kraus N, McGee TJ, Nicol TG. Developmental changes in P1 and N1 central auditory responses elicited by consonant-vowel syllables. *Electroencephalogr Clin Neurophysiol.* 1997;104:540-5.
19. Survillo WW. Recovery of the cortical evoked potential from auditory stimulation in children and adults. *Dev Psychobiol.* 1981;14(1):1-12.
20. Bernal J, Harmony T, Rodríguez M, Reyes A, Yáñez G, Fernández T, et al. Auditory event-related potentials in poor readers. *Int J Psychophysiol.* 2000;36:11-23.
21. Epsy KA, Molfese DL, Molfese VJ, Modglin A. Development of auditory event-related potentials in young children and relations to word-level reading abilities at age 8 years. *Ann Dyslexia.* 2004;54(1):9-38.
22. Ohlrich ES, Barnet AB. Auditory evoked responses during the first year of life. *Electroencephalogr Clin Neurophysiol.* 1972;32:161-9.
23. Barnet AB, Ohlrich ES, Weiss IP, Shanks B. Auditory evoked potentials during sleep in normal children from ten days to three years of age. *Electroencephalogr Clin Neurophysiol.* 1975;39:29-41.
24. Goodin DS, Squires KC, Henderson BH, Starr A. Age-related variations in evoked potentials to auditory stimuli in normal human subjects. *Electroencephalogr Clin Neurophysiol.* 1978;44:447-58.
25. Liasis A, Bamiou DE, Campbell P, Sirimanna T, Boyd S, Towell A. Auditory event-related potentials in the assessment of auditory processing disorders: a pilot study. *Neuropediatrics.* 2003;34:23-9.
26. Coch D, Skendzel W, Neville HJ. Auditory and visual refractory period effects in children and adults: an ERP study. *Clin Neurophysiol.* 2005;116:2184-203.
27. Mueller V, Brehmer Y, Oertzen TV, Li S, Lindenberger U. Electrophysiological correlates of selective attention: a lifespan comparison. *Neuroscience.* 2008;9(18).
28. Lins OG. *Ocular Artifacts in Recording EEGs and Event-Related Potentials.* Canadá: University of Ottawa; 1993.